

**Indicateur à barre lumineuse
 de courant continu
 96x24 mm**

**Direct current
 digital bargraph
 96x24 mm**

LD24

Mesure de courant continu bidirectionnel
 Affichage de toute grandeur directement
 proportionnelle
 Entrée pour signal standard :
 1 - 5 - 10 - 20mA - 4...20mA

Bidirectional direct current measurements
 Display any proportional
 process variable
 Input for standard signal:
 1 - 5 - 10 - 20mA - 4...20mA



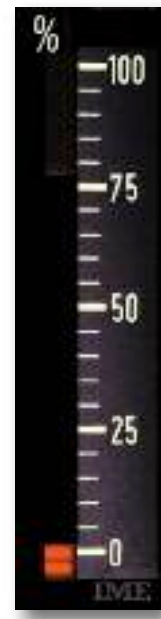
**Zéro Latéral 0...20mA
 Lateral Zero 0...20mA**



**Zéro Vif 4...20mA
 Live Zero 4...20mA**



**Zéro Central 20...0...20mA
 Central Zero 20...0...20mA**



REFERENCE ORDERING CODE	ENTREE INPUT	DISPOSITION BARRE BAR POSITION	ECHELLE SCALE	ALIM. AUX. AUX. SUPPLY
2016 0702	0...1mA	Vertical Vertical	0...100%	18...36V
2016 0722	0...5mA			
2016 0742	0...10mA			
2016 0762	0...20mA			
2015 0782	4...20mA			
2016 0700	0...1mA	Horizontal Horizontal	100...0...100%	
2016 0720	0...5mA			
2016 0740	0...10mA			
2016 0760	0...20mA			
2016 0780	4...20mA			
2016 0712	1...0...1mA	Vertical Vertical	100...0...100%	
2016 0732	5...0...5mA			
2016 0752	10...0...10mA			
2016 0772	20...0...20mA			
2016 0710	1...0...1mA			
2016 0730	5...0...5mA	Horizontal Horizontal	100...0...100%	
2016 0750	10...0...10mA			
2016 0770	20...0...20mA			

AFFICHAGE

Type d'affichage: bargraphe, LEDs rouges

N° segment (led): 30

ENTREE 0...Un

N° segment (led): 29 + 1 signalisation appareil alimenté

ENTREE 4...20mA

N° segment (led): 28 + 1 signalisation appareil alimenté + 1 signalisation 4mA

Dimensions segment: 2x5mm

Longueur de l'échelle: 75mm

Disposition barre: horizontale ou verticale

Graduation échelle : 0...100% - 100...0...100%

Indication du dépassement: Clignotement des 10 derniers segments

Précision: ± 1 segment

Temps de réponse: ≤ 100ms

ENTREE

Raccordement: direct

Courant nominal In: 1-5-10-20-4...20mA

Etendue de mesure: 0...In ou -In...0...In

Chute de tension: ≤ 400mV (In ≤ 20mA)

≤ 200mV (In > 20mA et 4...20mA)

Surcharge permanente: 2In

Surcharge instantanée : 10In/5s

ALIMENTATION AUXILIAIRE

Valeur nominale: 18...36Vdc

Protection contre l'inversion de polarité

Autoconsommation: ≤ 2W

ISOLEMENT

(EN/IEC 61010-1)

Catégorie de l'installation: III

Degré de pollution: 2

Tension d'essai 2kV valeur efficace 50Hz/1 min

Circuits considérés: mesure, alimentation

Tension d'essai 4kV valeur efficace 50Hz/1 min

Circuits considérés: tous les circuits et la masse

DISPLAY

Type of display: bargraph, red LED's

N° of segments (led): 30

INPUT 0...In

N° of segments (led): 29 + 1 to signal fed meter

INGRESSO 4...20mA

N° of segments (led): 28 + 1 to signal fed meter + 1 to signal 4mA

Segment size: 2x5mm

Scale length: 75mm

Bar position: horizontal or vertical

Scale marking: 0...100% - 100...0...100%

Overrange indication: blinking of last 10 segments

Accuracy: ± 1 segment

Response time: ≤ 100ms

INPUT

Connection: direct

Rated current In: 1-5-10-20-4...20mA

Measuring range: 0...In opp. -In...0...In

Voltage drop: ≤ 400mV (In ≤ 20mA)

≤ 200mV (In > 20mA and 4...20mA)

Continuous overload: 2In

Instantaneous overload: 10In/5s

AUXILIARY SUPPLY

Rated value: 18...36Vdc

Protected against incorrect polarity

Rated burden: ≤ 2W

INSULATION

(EN/IEC 61010-1)

Installation category: III

Pollution degree: 2

A.C. voltage test 2kV r.m.s. 50Hz/1 min

Considered circuits: measure, supply

A.C. voltage test 4kV r.m.s. 50Hz/1 min

Considered circuits: all circuits and earth

COMPATIBILITÉ ELECTROMAGNETIQUE

Test d'émission selon EN/IEC 61326-1

Test d'immunité selon EN/IEC 61326-1

CONDITIONS D'UTILISATION

Température de référence: 23°C ± 1°C

Température de fonctionnement: -5...55°C

Variation de l'indice de classe: ±0.03% / °C

Température de stockage et le transport: -40...70°C

Adapté pour l'utilisation en climat tropical

Puissance max. dissipée¹: ≤ 2W

¹Pour le dimensionnement thermique du coffret

BOITIER

Boîtier: encastré (découpe panneau 92x22,2mm)

Face avant: 96x24mm

Profondeur : 94mm

Raccordement : faston 3x0,8mm

Matériau du boîtier: polycarbonate autoextinguible

Degré de protection (EN60529): IP50 (face avant), IP20 (bornes)

Poids: 100 grammes

ELECTROMAGNETIC COMPATIBILITY

Emission tests according to EN/IEC 61326-1

Immunity tests according to EN/IEC 61326-1

ENVIRONMENTAL CONDITIONS

Reference temperature: 23°C ± 1°C

Specified operating range: -5...55°C

Variation to the class index: ±0,03%/°C

Limit range for storage and transport: -40...70°C

Suitable for tropical climates

Max. power dissipation¹: ≤ 2W

¹For switchboard thermal calculation

HOUSING

Housing: flush mounting (panel cutout 92x22,2mm)

Front frame. 96x24mm

Depth: 94mm

Connections: faston 3x0,8mm

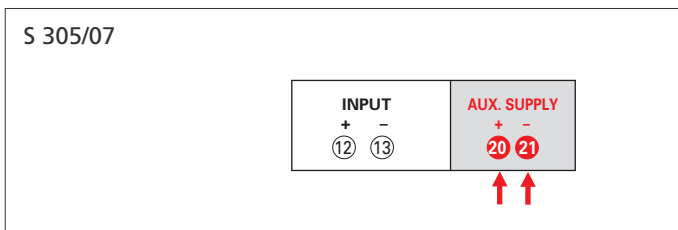
Housing material: self-extinguishing polycarbonate

Protection degree (EN/IEC 60529): IP50 (front frame) IP20 (terminals)

Weight: 200 grams

IMESYS se réserve à chaque moment de modifier les caractéristiques sans préavis écrit / IMESYS reserves the right to modify the technical characteristics without notice.

SCHEMA DE RACCORDEMENT WIRING DIAGRAM



DIMENSIONS DIMENSIONS

